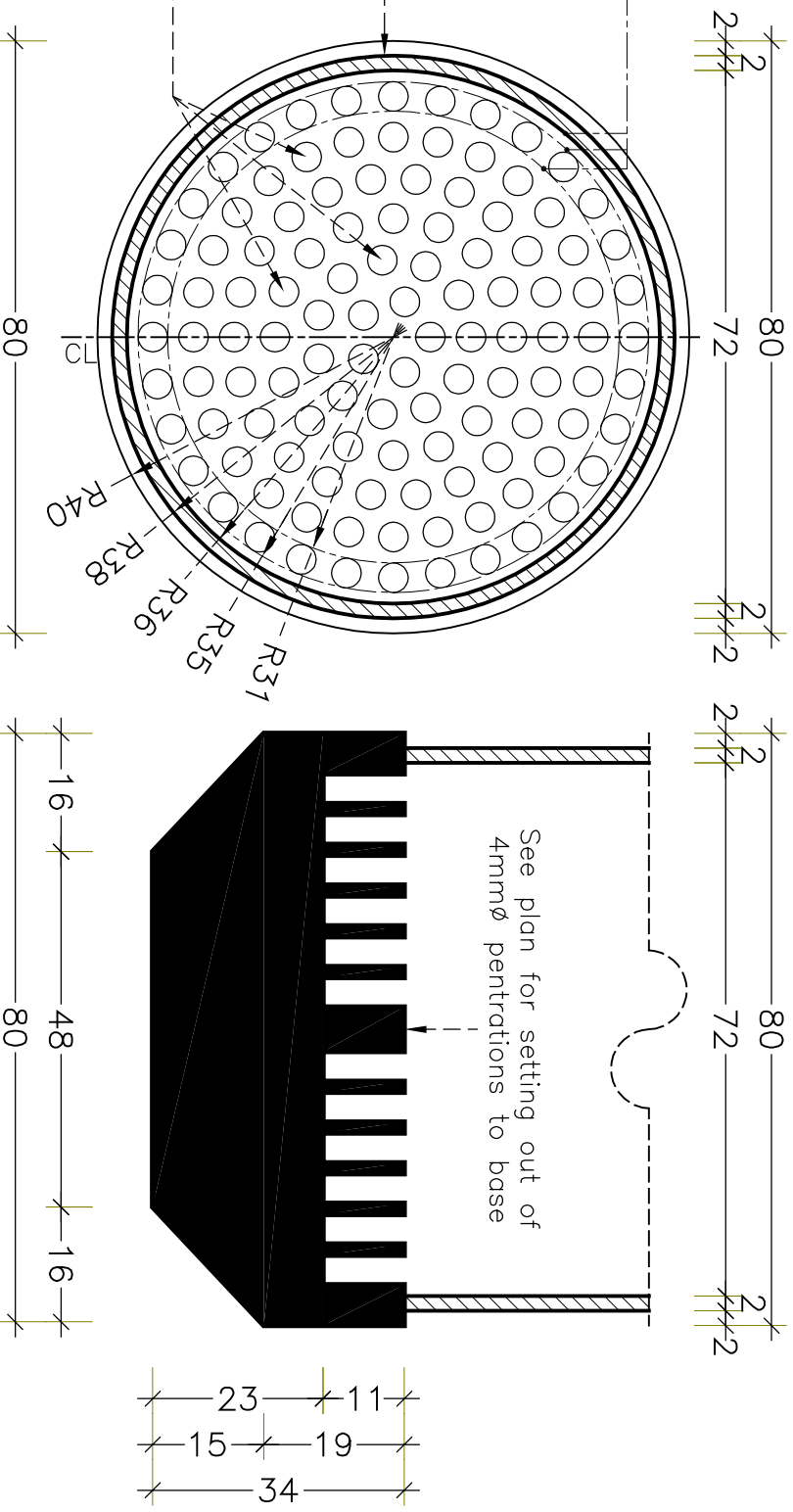


Set out:
 4mm \varnothing penetrations
 in rings 1.5mm
 apart. Offset inner
 wall of pipe 1.5mm
 inwards for outside
 edge of first ring.

Copper pipe to be
 76mm \varnothing with 2mm
 side walls &
 200mm tall.

4mm \varnothing by 11mm
 deep penetrations.
 total = 114.



ghetto pot 5
team ghetto

Aug '07
 scale 1:1